



3rd www.erpw2018.com
Rovinj-Rovigno, Croatia
1-5 OCTOBER 2018
ERPW

**3rd EUROPEAN RADIOLOGICAL
PROTECTION RESEARCH WEEK**

**FINAL
PROGRAMME**

Hosted and organized by:



Partners:



3rd EUROPEAN RADIOLOGICAL PROTECTION RESEARCH WEEK

October 1-5, 2018, Rovinj-Rovigno, Croatia

FINAL PROGRAMME

Conference organized by



Institute for medical research and occupational health

in cooperation with research platform



and supported by research platforms



and



Project

Technical organizer:



TABLE OF CONTENTS

ERPW General information	5
Detailed programme	7
Various project meetings	21
Floor plan	22
Social programme	23
Poster session and exhibition	25
List of exhibitors	26

ERPW GENERAL INFORMATION

REGISTRATION

Please collect your badge and your congress material at the **ERPW CONGRESS REGISTRATION DESK** (LEVEL 2 – in the lobby next to the reception).

If you have any special questions or would like to make any additional bookings on-site, please go to the registration desk.

OPENING HOURS REGISTRATION

Sunday, 30 September 2018	09:00 – 10:00 & 17:00 – 19:00
Monday & Tuesday, 1 & 2 October 2018	08.30 – 10:00 & 17:00 – 19:00
Wednesday, 3 October 2018	08.30 – 10:00
Thursday & Friday, 4 & 5 October 2018	07:30 – 09:00

BADGES

Access to all scientific sessions will only be possible with your personal badge. All participants are requested to wear their name badge throughout the congress.

CERTIFICATE

Certificates of attendance are available for pick-up at the Registration desk and will be provided together with your badge and congress bag.

BOOK OF ABSTRACTS

Book of abstracts will be available on the official congress web site (in the digital format) or printed book available for pick up at **INFO check point - EXHIBITION BOOTH IMI** next to the entrance to the Congress Hall Lone.

FOOD AND BEVERAGE

For all those with registration fees paid coffee breaks and lunches are included during congress from 1 October to 5 October 2018.

COFFEE BREAK – Congress Hall Foyer, hotel Lone

LUNCHES – Restaurant ON, hotel Lone

DAY	1ST COFFEE BREAK	LUNCH	2ND COFFEE BREAK
Monday		13:00 – 14:00	15:30 – 16:00
Tuesday	10:30 – 11:00	12:30 – 14:00	15:30 – 16:00
Wednesday	10:30 – 11:00	12:30 – 14:00	15:30 – 16:00
Thursday	10:30 – 11:00	12:30 – 14:00	15:30 – 16:00
Friday	10:30 – 11:00	12:30 – 14:00	

PHOTOS AND RECORDINGS

Photos and videos will be taken during the ERPW 2018.

INTERNET / WiFi

Free WIFI is available throughout the congress centre and the hotel.

INFO POINT

The place for answers – with the Info Point there will not be any open questions.

SPEAKER

A speaker preparation desk will be located at the INFO POINT.

Presentations can be submitted to a technician in pdf or powerpoint format.

Speakers are required to provide the technician with their presentation as soon as possible and no later than half an hour before the start of the session.

Located in the Congress Hall Foyer, it provides information about several important aspects of the congress, including the programme and any changes to the scientific and social program as well as general information for each day. Last minute changes will be announced at the Info Point .

The Info Point is sponsored by



DETAILED PROGRAMME

MONDAY 01.10.2018. PLENARY - CONGRESS HALL LONE

Main congress hall

8:30	10:00	REGISTRATION	CHAIRS
17:00	19:00		
10:00	11:00	OPENING ceremony	
11:00	11:20	INTRODUCTION TO OUTCOMES OF THE MELODI-CONCERT 2018 WORKSHOP ON INDIVIDUAL RADIOSENSITIVITY AND RADIOSUSCEPTIBILITY (L.Sabatier)	S. Salomaa
11:20	11:45	ESTABLISHING THE MECHANISMS AFFECTING THE INDIVIDUAL RESPONSE TO IONISING RADIATION, INCLUDING THE CONTRIBUTION OF ANY GENETIC COMPONENT (P.Jeggo)	L. Sabatier
11:45	12:10	CLINICAL OBSERVATIONS ON INDIVIDUAL RADIOSENSITIVITY AND RADIOSUSCEPTIBILITY - A MELODI POSITION PAPER FOLLOWING THE MALTA 2018 WORKSHOP (S. Salomaa)	
12:10	12:55	HEALTH RISK ASSESSMENTS AND UNCERTAINTIES (A.Auvinen)	
13:00	14:00	LUNCH	
14:00	14:30	WHAT IS MACHINE LEARNING / ARTIFICIAL INTELLIGENCE AND HOW CAN IT BE USED EG IN RADIATION BIOLOGY OR RADIATION PROTECTION? (J.Teuwen)	S. Salomaa
14:30	15:00	ARTIFICIAL INTELLIGENCE FOR TECHNICAL RADIATION PROTECTION IN MEDICAL IMAGING (C.Hoeschen)	G. Frija
15:00	15:30	RADIOMICS (R.Leijenaar)	
15:30	16:00	COFFEE BREAK	
16:00	16:15	SSH - ENGAGE : IMAGINING ENGAGEMENT: A HANDS-ON EXPERIMENT (C.Turcanu, B. Abelshausen, M. Van Ouhensden)	C. Turcanu
16:15	16:45	SOCIETAL AND ETHICAL CHALLENGES OF HEALTH MONITORING STRATEGIES (D.Oughton)	D. Oughton
16:45	17:15	ENVIRONMENTAL MONITORING IN NUCLEAR EMERGENCIES: EXPERIENCE FROM EXERCISES, DRILLS AND SMALL INCIDENTS (G. Olyslaegers)	
17:15	17:45	THE ICRU / ICRP PROPOSAL FOR OPERATIONAL QUANTITIES FOR EXTERNAL RADIATION EXPOSURE: MOTIVATION, IMPLEMENTATION AND CONSEQUENCES (T.Otto)	T. Otto
17:45	18:15	PRACTICAL ISSUES THAT WILL ARIeSE IF THE PROPOSED OPERATIONAL QUANTITIES ARE ADOPTED (R.Tanner)	
20:30	22:00	WELCOME RECEPTION (outdoors)	

TUESDAY 02.10.2018. PARALLEL sessions MELODI Sessions
CONGRES HALL LONE Section 1

8:30	10:00	REGISTRATION	CHAIRS
17:00	19:00		
		SHAPE OF THE DOSE-RESPONSE RELATIONSHIP FOR RADIATION-INDUCED HEALTH EFFECTS	S. Salomaa M. Kreuzer
9.00	9.30	NATURAL BACKGROUND RADIATION AND CANCER RISKS IN CHILDREN (b. Spycher)	
9:30	10:00	INCREASED RADIATION-INDUCED BREAST CANCER RISK FOR WOMEN WITH FAMILIAL BREAST CANCER IN THE SWEDISH HEMANGIOMA COHORT (M. Eidemüller)	
10:00	10:30	DOES RADON CAUSE CANCERS OTHER THAN LUNG CANCER? - RESULTS FROM THE GERMAN URANIUM MINER COHORT STUDY, 1946-2013 (M. Kreuzer)	
10:30	11:00	COFFEE BREAK	
		UNDERSTANDING THE HEALTH EFFECTS OF INHOMOGENEOUS DOSE DISTRIBUTIONS, RADIATION QUALITY AND INTERNAL EMITTERS	B. Madas A. Wojcik
11:00	11:20	BACKGROUND AND STATE OF THE ART IN THE FIELD OF ABSCOPAL RADIATION EFFECTS: DEVELOPING THE SEPARATE PROJECT (A. Saran)	
11:20	11:45	NASA SPACE RADIATION HEALTH RISKS: MAJOR QUESTIONS AND MITIGATION STRATEGIES (J. Huff)	
11:45	12:00	GENE EXPRESSION IN LYMPHOCYTES EXPOSED TO MIXED BEAMS OF ALPHA AND X-RADIATION (L. Cheng)	
12:00	12:15	NEW SOFTWARE TO INTEGRATE UNCERTAINTY IN THE OPTIMISATION OF MONITORING FOR INTERNAL CONTAMINATION (E. Davesne)	
12:15	12:30	THE EFFECT OF MUCOCILIARY CLEARANCE ON RADIATION BURDEN OF THE BRONCHIAL AIRWAYS AT RADON INHALATION (P. Furi)	
12:30	14:00	LUNCH	

		NEW FINDINGS IN BIOLOGICAL AND HEALTH EFFECTS AT LOW DOSES	C. Badieq U. Galderisi
14:00	14:40	LATEST FINDINGS OF THE EPI-CT PROJECT; PROJECT RESULTS AND FURTHER DEVELOPMENTS (G. Byrnes)	
14:40	15:00	DNA DAMAGE IN THE LENS EPITHELIUM AND RADIATION-INDUCED CATARACT: INITIAL RESULTS FROM THE LDLensRad PROJECT (S. Barnard)	
15:00	15:20	LIFETIME STUDIES IN MICE ASSESSING RADIATION-INDUCED LENS OPACITIES AND OTHER BIOLOGICAL EFFECTS (C. Dalke)	
15:20	15:30	WHY THE EFFECTIVENESS OF THE REHABILITATION IS DIFFERENT? LONGITUDINAL COMPLEX NEUROPSYCHOLOGICAL AND PSYCHOSOCIAL STUDY IN LIQUIDATORS OF THE CHERNOBYL DISASTER (Y. Malova)	
15:30	16:00	COFFEE BREAK	
		EXPLORATION AND DEFINITION OF THE ROLE OF GENETIC AND EPIGENETIC MODIFICATIONS IN RADIATION-INDUCED HEALTH EFFECTS	K. Lumniczky C. Tapio
16:00	16:25	NEW INSIGHT IN LOW-RADIATION BACKGROUND BIOLOGY AT THE INFN UNDERGROUND GRAN SASSO NATIONAL LABORATORY (LNGS) (M.A. Tabocchini)	
16:25	16:45	A GENETIC AND CYTOGENETIC STUDY OF BRITISH NUCLEAR TEST VETERANS AND THEIR CHILDREN (A. Moorhouse)	
16:45	17:05	LONG-TERM PROLIFERATION OF NORMAL HUMAN FIBROBLAST EXPOSED TO LOW DOSE RADIATION AT LOW DOSE RATE (P. Akuwudike)	
17:05	17:25	PROTEIN-URANIUM INTERACTIONS: STUDY OF URANIUM TARGETS AND ENGINEERING OF SELECTIVE AND AFFINE SITES FOR BIOSENSORS OR EXTRACTANTS (C. Berthomieu)	
20:00	23:00	ISTRIAN SHOOTERS PARTY (Monte Mulini Beach Bar)	

TUESDAY 02.10.2018. PARALLEL sessions EURAMED–EURADOS Sessions
CONGRES HALL LONE Section 2

8:30	10:00	REGISTRATION	CHAIRS
17:00	19:00		
9:00	9:05	INTRODUCTION: TOWARDS INDIVIDUALIZED TREATMENT PLANNING IN RADIONUCLIDE THERAPY? (K. Bacher)	
9:05	9:30	DEVELOPMENT OF PRIMARY STANDARDS FOR RADIONUCLIDE THERAPY (A.M. Denis-Bacelar)	
9:30	9:50	UNCERTAINTIES IN QUANTITATIVE IMAGING (J. Gear)	
9:55	10:10	UNCERTAINTY ANALYSIS IN RADIONUCLIDE RADIOTHERAPY (W.B. Lee)	
10:10	10:20	BIODISTRIBUTION MODELING AND DOSE ASSESSMENTS OF RADIUM-233 USED FOR TREATMENT OF PROSTATE CANCER (V. Höllriegel)	
10:20	10:30	RADIO-IODINE THERAPY OF GRAVES' DISEASE: EXTRACTING THE DOSE-EFFECT RELATIONSHIP FROM OBSERVATIONAL STUDIES (D. Broggio)	
10:30	11:00	COFFEE BREAK	
		BREAST RADIOTHERAPY AND SECONDARY CARDIOVASCULAR RISKS	R. Copes G. Frija
11:00	11:20	CLINICAL STUDIES ON CARDIAC COMPLICATIONS AFTER BREAST RT (S. Jacob)	
11:20	11:45	RADIOBIOLOGY OF SECONDARY CARDIOVASCULAR RISK AFTER BREAST RADIOTHERAPY, THE MEDIRAD PROJECT (R. Coppes)	
11:45	12:10	DEVELOPING A BIOLOGICALLY-BASED RISK MODEL FOR ATHEROSCLEROTIC DISEASES AFTER RADIATION THERAPY (C. Kaiser)	
12:10	12:20	RESULTS OF CARDIAC DOSIMETRY FOR FRENCH BREAST CANCER RADIOTHERAPY PATIENTS (V. Walker)	
12.30	14:00	LUNCH	

		OPTIMIZATION IN FLUOROSCOPICALLY-GUIDED INTERVENTIONAL PROCEDURES AND CT	J. Demilakis F. Vanhavere
14:00	14:25	VERIDIC PROJECT: VALIDATION AND ESTIMATION OF RADIATION SKIN DOSE IN INTERVENTIONAL CARDIOLOGY (J. Dabin)	
14.25	14.50	EVALUATION OF EFFICIENCY AND EFFECTIVENESS OF STAFF RP TOOLS FOR INTERVENTIONAL PROCEDURES (G. Piernik)	
14:50	15:05	AUTOMATIC ASSESSMENT OF MEDICAL X-RAY IMAGE QUALITY USING THE MODULATION TRANSFER FUNCTION (Z. Passand)	
15:05	15:20	SUBJECTIVE QUALITY ASSESSMENT OF THORACIC CT IMAGES (M Revel)	
15:30	16:00	COFFEE BREAK	

TUESDAY 02.10.2018. PARALLEL sessions EURADOS Session CONGRES HALL LONE Section 2

		SPACE DOSIMETRY INCL.VARIOUS DOSIMETRIC AND RISK CALCULATIONS AND MODELING	CHAIRS
16:00	16:30	RADIATION MONITORING OF GLE ON BOARD COMMERCIAL FLIGHT (F. Trompier)	O. Ploc F. Trompier
16:30	17:00	RADIATION DOSE ONBOARD AIRCRAFT INDUCED BY HIGH-ENERGY ATMOSPHERIC PHENOMENA DURING THUNDERSTORMS (O. Ploc)	
17:00	17:20	CARDIOVASCULAR DECREMENTS FROM SPACE RADIATION EXPOSURE: RISK CHARACTERIZATION, MODELING, AND MITIGATION (Z. S. Patel)	
17:20	17:30	A NEW SHIELDING CALCULATION SOFTWARE FOR DIAGNOSTIC X-RAY FACILITIES (C. Zicari)	
20:00	23:00	ISTRIAN SHOOTERS PARTY (Monte Mulini Beach Bar)	

TUESDAY 02.10.2018. PARALLEL sessions ALLIANCE Session
CONGRES HALL LONE Section 3

8:30	10:00	REGISTRATION	CHAIRS
17:00	19:00		
		NORM (TENORM) ISSUES FOR DOSE ASSESSMENT / REMEDIATION STRATEGIES	S. Sachs C. Berthomieu
9:00	9:15	RADIOECOLOGICAL RESEARCH OF WG NORM WITHIN THE ALLIANCE (A. Thuro)	
9:15	9:30	A REGULATORY PERSPECTIVE ON THE RADIOLOGICAL IMPACT OF NORM IN INDUSTRIES, WASTE AND LEGACY SITES (J. Mrdakovic Popic)	
9:30	9:45	RADON MEASUREMENTS USING THE NEWLY DEVELOPED PROTOTYPE DEVICE (M.R. Tanha)	
9:45	10:00	THE ROPHIN SITE IN FRANCE - A PLACE TO CONDUCT INTERDISCIPLINARY RESEARCH ON NORM/TENORM-RELATED ISSUES (G. Montavon)	
10:00	10:15	TRANSFER AND RELATED DOSE ASSESSMENT OF NATURAL RADIONUCLIDES IN PLANTS AND MOSSES GROWING ON A PHOSPHOGYPSUM STOCKPILE IN PORTUGAL. (J. Corisco)	
10:15	10:30	FRESHWATER KD DISTRIBUTIONS IN FUNCTION OF M/V RATIO, DOC AND PH (W. Tomczak)	
10:30	11:00	COFFEE BREAK	
		NORM (TENORM) ISSUES FOR DOSE ASSESSMENT / REMEDIATION STRATEGIE CONT.	S. Sachs C. Berthomieu
11:00	11:15	RADIATION PROTECTION IN THE OIL EXPLORATION SECTOR (S. Landsberger)	
11:15	11:30	NORM IN THE OIL AND GAS INDUSTRY: ERICA TOOL ASSESSMENT OF POTENTIAL IMPACTS OF IONISING RADIATION ON TERRESTRIAL BIOTA (Ž. Veinović)	
11:30	11:45	ELEMENTARY AND NORM CONCENTRATION PROFILES IN THREE SWEDISH PIT LAKES (R. Thomas)	
11:45	12:00	MULTIDISCIPLINARY APPROACH CHARACTERIZATION OF U/MICROBIAL INTERACTIONS FOR BIOREMEDIATION PURPOSES (I. Sanchez-Castro)	
12:00	12:15	INSIGHTS INTO URANIUM TOLERANCE OF MICROBACTERIUM OLEIVORANS A9 BY PROTEOGENOMIC ANALYSES (V. Chapon)	
12:15	12:30	SIMULTANEOUS MEASUREMENT OF DIFFUSION AND REACTION IN SOIL (J. Darmvzalova)	

12:30	14:00	LUNCH	
13:30	15:30	ROVINJ SIGHTSEEING TOUR (meeting point - hotel Lone RECEPTION)	CHAIRS
		NUCLEAR DECOMMISSIONING AND RADIOECOLOGY	P. Nogueira H. Vandenhove
14:00	14:15	OPTIMIZING FLIGHT-LINE DISTANCE FOR SOIL DECONTAMINATION, APPLICATION TO CONTAMINATED FUKUSHIMA TERRITORIES (P. Masoudi)	
14:15	14:30	TRANSLATION AND APPLICATION OF THE SHAMINSEN RECOMMENDATIONS FOR PREPAREDNESS AND REMEDIATION AFTER NUCLEAR ACCIDENTS TO OTHER DISASTERS TYPES (CHEMICAL, NATURAL, ETC.) (L. Liutsko)	
14:30	14:45	ARTIFICIAL RADIONUCLIDES IN VEGETATIVE COVER AT THE SEMIPALATINSK TEST SITE AND IN PLACES ADJACENT TO ITS TERRITORY (N. Larionova)	
14:45	15:00	FROM ^{241}Am TO LANTHANIDE STABLE ISOTOPES: CHECKING CHEMICAL ANALOGY IN THE QUANTIFICATION OF SOLID-LIQUID DISTRIBUTION COEFFICIENTS (M. Vidal)	
15:00	15:15	UNRESOLVED RADIOACTIVE WASTE AT THE INSTITUTE OF ONCOLOGY, LJUBLJANA, SLOVENIA (U. Čotar)	
15:30	16:00	COFFEE BREAK	
		CHALLENGES FOR ENVIRONMENTAL MONITORING STRATEGIES - IMPROVING RADIOLOGICAL ASSESSMENTS AND MANAGEMENT	A. Real R. Gilbin
16:00	16:15	QUANTIFYING EXPOSURE OF PLANTS AND ANIMALS TO RADIATION: A NEW METHODOLOGY (N.A. Beresford)	
16:15	16:30	ENVIRONMENTAL MEASUREMENTS OF RADIOACTIVITY AND RADIATION PROTECTION QUANTITY AVAILABLE IN NON-GOVERNMENTAL NETWORKS WEB SITES (G. Iurlaro)	
16:30	16:45	MOBILE DETECTION OF IONISING RADIATION FOLLOWING A NUCLEAR OR RADIOLOGICAL INCIDENT - THE EMPIR PROJECT "PREPAREDNESS" (s. Neumaier)	
16:45	17:00	^{210}Po IN SWEDISH DIET (F. Pinero-Garcia)	
17:00	17:15	MONTE CARLO SIMULATION OF DOSE CONVERSION COEFFICIENTS FOR MONOENERGETIC ELECTRONS INCIDENT ON A FISH EYE LENS MODEL (P. Nogueira)	
17:15	17:30	A REVIEW ON EXISTING APPS FOR CITIZEN BASED DOSE MEASUREMENTS (P. Fatibene)	
20:00	23:00	ISTRIAN SHOOTERS PARTY (Monte Mulini Beach Bar)	

TUESDAY 02.10.2018. PARALLEL sessions SSH Session

Meeting room 4

12:45	14:15	Round table STAKEHOLDER ENGAGEMENT IN RADIATION PROTECTION – COMPARING AND CONTRASTING THREE EXPOSURE CONTEXTS (C. Turcanu, M. Van Oudheusden, B. Abelshausen)
-------	-------	--

WEDNESDAY 03.10.2018. PARALLEL sessions MELODI Session

CONGRES HALL LONE Section 1

8:30	10:00	REGISTRATION	CHAIRS
17:00	19:00		
		IDENTIFICATION, DEVELOPMENT AND VALIDATION OF BIOMARKERS FOR EXPOSURE, EARLY AND LATE EFFECTS FOR CANCER OR/AND NON-CANCER DISEASES	U. Kulka R. Quintens
9:00	9:20	RADIATION-INDUCED MIRNAS AS BIOMARKERS OF EXPOSURE IN PERIPHERAL BLOOD LEUKOCYTES OF BREAST CANCER PATIENTS (L. Lindholm)	
9:20	9:40	ANALYSIS OF BONE MARROW AND LEUKAEMIA CELL EXTRACELLULAR VESICLE MIRNA CARGOS (E. Rutten)	
		MALTA 2018 RADIATION SENSITIVITY WORKSHOP FINDINGS	T. Jung S. Salomaa
9:40	10:10	POTENTIAL SCREENING ASSAYS FOR INDIVIDUAL RADIATION SENSITIVITY AND SUSCEPTIBILITY AND THEIR CURRENT VALIDATION STATE / FINDINGS OF THE MALTA 2018 RADIATION SENSITIVITY WORKSHOP (M. Gomolka)	
10:10	10:30	DISCUSSION ON MALTA WORKSHOP (RADIOSENSITIVITY)	
10:30	11:00	COFFEE BREAK	
		SUMMARIES OF DISCUSSION IN EACH SESSION AND OPEN SRA DISCUSSION	
11:00	11:45	SUMMARIES AND FINDINGS (T. Jung)	
14.45	12:30	DISCUSSION	
12:30	14:00	LUNCH	

WEDNESDAY 03.10.2018. PARALLEL sessions EURAMED Session CONGRES HALL LONE Section 2

8:30	10:00	REGISTRATION	CHAIRS
17:00	19:00		
		RADIATION INDUCED RISKS OF CT SCANS	chairs
9:00	9:40	CT DOSES AND RADIOGENIC RISKS (J. Demilakis)	J. Demilakis P. Graciano
9:40	10:20	CT DOSE MANAGEMENT SYSTEMS (V. Tsapaki)	
10:20	10:30	THE INFLUENCE OF TUBE CURRENT MODULATION ON ORGAN DOSE CONVERSION COEFFICIENTS (A. Hassan)	
10:30	11:00	COFFEE BREAK	
11:00	12:30	OPEN STAKEHOLDER SESSION: EURAMED SRA, PRIORITIES AND ROADMAP	J. Demilakis C. Hoeschen
12:30	14:00	LUNCH	

WEDNESDAY 03.10.2018. PARALLEL sessions ALLIANCE Session CONGRES HALL LONE Section 3

8:30	10:00	REGISTRATION	CHAIRS
17:00	19:00		
		EFFECTS OF IONISING RADIATION AT LOW-DOSES, LOW DOSE RATES	N. Horemans N. Beresford
9:00	9:15	IMPACT OF MULTIPLE TOXIC PRESSURES ON AQUATIC SYSTEMS IN THE RHONE RIVER BASIN (R. Gilbin)	
9:15	9:30	HUMAN FOODCHAIN MODELING - REDUCING UNCERTANTIES (N.A. Beresford)	
9:30	9:45	RADIATION DOSE OF WORKERS ENGAGED IN DECONTAMINATION OF ENVIRONMENT AFTER FUKUSHIMA-DAIICHI ACCIDENT (T. Ogawa)	
9:45	10:00	INFLUENCE OF LONG TERM EXPOSURE TO ENHANCED GAMMA RADIATION ON THE DEVELOPMENT OF ORGANISMS: A CASE STUDY COMPARING (N. Horemans)	
10:30	11:00	COFFEE BREAK	

		ATMOSPHERIC RELEASE	J. Tschiersch O. Masson
11:00	11:35	PECULIARITIES OF AIR CONTAMINATION WITH TRITIUM AT THE TERRITORY OF SEMIPALATINSK TEST SITE: SOURCES AND FORMATION MECHANISMS (O.N. Lyakhova)	
11:35	11:55	INVESTIGATIONS ON AMBIENT ¹²⁹ I (GAS AND AEROSOL) AT SHORT DISTANCE FROM THE LA HAGUE REPROCESSING PLANT (O. Masson)	
11:55	12:15	RESUSPENSION DUE TO REMEDIATION ACTIVITIES IN THE FUKUSHIMA EXCLUSION ZONE AND IMPLICATION TO DOSE (J. Tschiersch)	
12:15	12:35	LONG-TERM MEASUREMENTS AND ANALYSIS OF RADIOACTIVE CONTAMINATION WITH NATURAL AND ARTIFICIAL RADIONUCLIDES IN THE ATMOSPHERE IN THE SOUTH OF POLAND (E. Nalichowska)	
12:30	14:00	LUNCH	

WEDNESDAY 03.10.2018. PARALLEL sessions IMROH-NERIS Session CONGRES HALL LONE Section 4

8:30	10:00	REGISTRATION	CHAIRS
17:00	19:00		
		PRACTICAL MOBILE UNIT PRESENTATION + MODERN RESEARCH AND MEASUREMENTS REQUIREMENTS	B. Zorko T. Meštrović
9:00	9:20	Introduction	
9:20	9:40	INVOLVEMENT OF RESIDENTS LIVING IN THE VICINITY OF THE CHERNOBYL EXCLUSION ZONE IN MONITORING AND INTERPRETING MEASUREMENT RESULTS AND THE INFLUENCE OF INDIVIDUAL BEHAVIOURS (P. Crouail)	
9:40	10:00	NOVEL SPECTROMETRY SYSTEMS FOR RADIOLOGICAL EARLY WARNING NETWORKS IN EUROPE - A SUMMARY OF METROERM RESULTS (S. Neumaier)	
10:00	10:15	CHALLENGES OF RADIOLOGICAL/NUCLEAR ON-SITE MEASUREMENTS (B. Petrínec)	
10:15	10:30	THE IMPORTANCE OF MOBILE UNITS IN EMERGENCY PREPAREDNESS AND RESPONSE (B. Zorko)	
10:30	11:00	COFFEE BREAK	
		PRACTICAL MOBILE UNIT PRESENTATION + MODERN RESEARCH AND MEASUREMENTS REQUIREMENTS	B. Petrínec B. Vodenik
11:00	12:30	PRACTICAL SESSIONS (B. Petrínec, B. Zorko)	
12:30	14:00	LUNCH	

WEDNESDAY 03.10.2018. PARALLEL sessions Education&Training Session

Meeting Room 7

8:30	10:00	REGISTRATION	CHAIRS
17:00	19:00		
		EDUCATION AND TRAINING ISSUES	M. Coeck V. Smyth
9:00	9:30	EDUCATING ABOUT RADIATION RISKS IN HIGH SCHOOLS: TOWARDS IMPROVED PUBLIC UNDERSTANDING OF THE COMPLEXITY OF LOW DOSE RADIATION HEALTH EFFECTS (A. Wojcik)	
9:30	9:50	THINKING BEYOND THE ETHICS OF GOOD INTENTIONS: AN ETHICS OF CARE FOR RADIOLOGICAL PROTECTION (G. Meskens)	
9:50	10:10	CONTINUOUS PROFESSIONAL DEVELOPMENT FOR RADIATION PROTECTION PROFESSIONALS: BRINGING NEW SCIENTIFIC INSIGHTS IN PRACTICE (T. Clarijs)	
10:10	10:30	ACCES TO INFRASTRUCTURES: AIR ² AND AIR ² D ² (M. Panagiotopoulou)	
10:30	11:00	COFFEE BREAK	

IMROH OSL Session

Meeting Room 7

		PERSONAL, PATIENT AND ENVIRONMENTAL OSL DOSIMETRY NEWS	CHAIRS
11:00	12:30	THE DEVELOPMENT OF AN EYE-LENS DOSIMETER FOR INTEGRATION INTO RADIATION PROTECTION SPECTACLES (V. Bandalò)	M. Surić Mihić L. Pavelić
12:30	14:00	LUNCH	

WEDNESDAY 03.10.2018 PLENARY - CONGRESS HALL LONE (afternoon)

Main congress hall

14:00	14:15	INTRODUCE ENA TO THE ERPW2018 AUDIENCE (I. Prlic)	chairs J. Repussard
14:15	14:45	EPIGENETICS VS. GENETICS IN LIVING ORGANISMS (J. Kamstra)	
14:45	15:00	INTRODUCE EMN - EUROPEAN METROLOGY NETWORKS TO THE ERPW2018 AUDIENCE (H. Rabus)	
15:00	15:30	IONIZING RADIATION RISK PRESENTATION TO A PUBLIC (MEDIA APPROACH) (AND EDUCATION?) (A. Nietzsche)	
15:30	16:00	COFFEE BREAK	
		MELODI AWARD	

16:00	16:15	MEDICAL RADIATION EXPOSURE AND BIOLOGICAL EFFECTS: INSIGHTS FROM A MOLECULAR EPIDEMIOLOGY APPROACH (A. Borghini)	
16:15	16:45	INTEGRATION OF RP RESEARCH IN EUROPE (J. Repussard)	
16:45	17:00	4TH ERPW2019 - STOCKHOLM (A. Wojcik)	
17:00	17:30	SUMMARY AND CONCLUDING REMARKS (including E&T needs)	
		CLOSING - A SHORT COMMUNICATION FROM IMROH - HOST AND OTHER PARTICIPANTS AND SPONSORS	
20:30	-----	CONGRESS GALA DINNER	

THURSDAY 04.10.2018. CONCERT Projects Day

CONGRES HALL LONE Sections 1 & 2

7:30	9:00	REGISTRATION	
8:00	8:45	CONFIDENCE THE CONFIDENCE PROJECT (W. Raskob)	
8:45	9:30	LDLensRad LDLensRad: Towards a full mechanistic understanding of low dose radiation induced cataracts (E. A. Ainsbury)	
9:30	9:45	TERRITORIES TERRITORIES WORKSHOP ON COMMUNICATION OF UNCERTAINTIES OF RADIOLOGICAL RISK ASSESSMENT TO STAKEHOLDERS (A. Real)	
9:45	10:00	TERRITORIES TERRITORIES: TO ENHANCE UNCERTAINTIES REDUCTION AND STAKEHOLDERS INVOLVEMENT TOWARDS INTEGRATED AND GRADED RISK MANAGEMENT OF HUMANS AND WILDLIFE IN LONG-LASTING RADIOLOGICAL EXPOSURE SITUATIONS (M. Simon-Cornu)	
10:00	10:15	TERRITORIES MAPPING THE COMPLEXITY OF SOCIETAL UNCERTAINTIES IN LONG-TEM EXPOSURE SITAUTIONS : TWO CASE STUDIES (B. Abelshausen)	
10:15	10:30	DISCUSSION	
10:30	11:00	COFFEE BREAK	

11:00	11:30	ENGAGE STAKEHOLDER ENGAGEMENT IN EMERGENCY PREPAREDNESS AND RESPONSE: STATE OF THE ART (B. Abelshausen)
11:30	12:00	LEU-TRACK THE ROLE OF EXTRACELLULAR VESICLES IN MODULATING THE RISK OF LOW DOSE RADIATION-INDUCED LEUKEMIA (LEU-TRACK) (K. Lumniczky)
12:00	12:30	PODIUM PODIUM: Personal online dosimetry using computational methods (F. Vanhavere)
12:30	14:00	LUNCH
14:00	14:30	VERIDIC VERIDIC: VALIDATION AND ESTIMATION OF RADIATION SKIN DOSE IN INTERVENTIONAL CARDIOLOGY (J. Dabin)
14:30	15:00	SEPARATE BACKGROUND AND STATE OF THE ART IN THE FIELD OF ABCOPAL RADIATION EFFECTS: DEVELOPING THE “SEPARATE” PROJECT (A. Saran)
15:00	15:30	SHAMISEN-SINGS SHAMISEN-SINGS PROJECT - STAKEHOLDER INVOLVEMENT IN GENERATING SCIENCE (RADIATION PROTECTION) (L. Liutsko)
15:30	16:00	COFFEE BREAK
16:00	18:00	WP Leaders, WP1 - Discussion and conclusions remarks

FRIDAY 05.10.2018. Young Scientists Day

CONGRES HALL LONE Sections 1

7:30	09:00	REGISTRATION	MODERATORS
8:30	8:45	DEVELOPMENT OF A COMPACT SiPM-BASED GAMMA AND X-RAY DETECTOR FOR DOSE RATE MEASUREMENTS (L. Pavelic)	K. Lumniczky S. Tapio
8:45	9:00	CHRONIC EXPOSURE TO GAMMA RADIATION INDUCES REPROTOXIC EFFECTS IN COMBINATION WITH ENHANCED GERM CELL APOPTOSIS AND DNA DAMAGE IN CAENORHABDITIS ELEGANS EMBRYONIC CELLS (E. Maremonti)	
9:00	9:15	PARASITISM MEDIATES NEGATIVE EFFECTS OF RADIATION TO BUMBLE-BEES AS DEMONSTRATED BY LABORATORY EXPERIMENTS AND FIELD STUDIES IN CHERNOBYL (K. Raines)	
9:15	9:30	PERSONALIZED RADIOIODINE UPTAKE MEASUREMENT WITH GAMMA-CAMERA USING 3D REALISTIC THYROID PHANTOMS (T. Beaumont)	
9:30	9:45	TRANSFER PARAMETERS VALUES FOR 90Sr AND 137Cs ISOTOPES IN MEDITERRANEAN ECOSYSTEM (F. Gomez Polo)	
9:45	10:00	ENHANCE THE DECISION-MAKING PROCESS TO MINIMIZE THE IMPACT IN AGRICULTURAL AREAS DERIVED FROM A NUCLEAR ACCIDENT (B. Garcia Puerta)	
10:00	10:15	VERIFYING THE PERFORMANCE OF THE ARGON-41 MONITORING SYSTEM FROM FLUORIDE-18 PRODUCTION FOR MEDICAL APPLICATION (N. Virgili)	
10:15	10:30	CONSTRUCTION OF THE MAMMOGRAPHY PHANTOM FOR 2D AND 3D X-RAY IMAGING (M. Justic)	
10:30	11:00	COFFEE BREAK	
11:00	11:15	THE EFFECT OF IONIZING RADIATION ON AMOUNT AND PHENOTYPE OF BONE MARROW-DERIVED EXTRACELLULAR VESICLES (N. Sandor)	
11:15	11:30	PROTEOMIC ANALYSES OF EXOSOMES DERIVED FROM BONE MARROW AND BLOOD PLASMA IN IRRADIATED MICE (P. Subedi)	
11:30	11:45	EXTRACELLULAR VESICLES FROM IRRADIATED MICE INDUCED APOPTOSIS IN MOUSE BONE MARROW (D. Kis)	
11:45	12:00	“SEPARATE”: SYSTEMIC EFFECTS OF PARTIAL-BODY EXPOSURE TO LOW RADIATION DOSES (Z. Nisar Khan)	
12:00	12:15	EXTERNAL DOSE-RATE MEASUREMENTS BASED ON SMARTPHONE CMOS SENSORS (A. Mafodda)	
12:15	12:30	NANODOSIMETRIC ESTIMATION OF DNA DAMAGE IN A GOLD NANOPARTICLE LOADED CELL AFTER PHOTON IRRADIATION (T.Dressel)	
12:30	14:00	LUNCH	
14:00	14:30	SSH - ENGAGE: Imagining engagement: a hands-on experiment -	
14:30	15:30	POSTER VIEWING & NETWORKING	

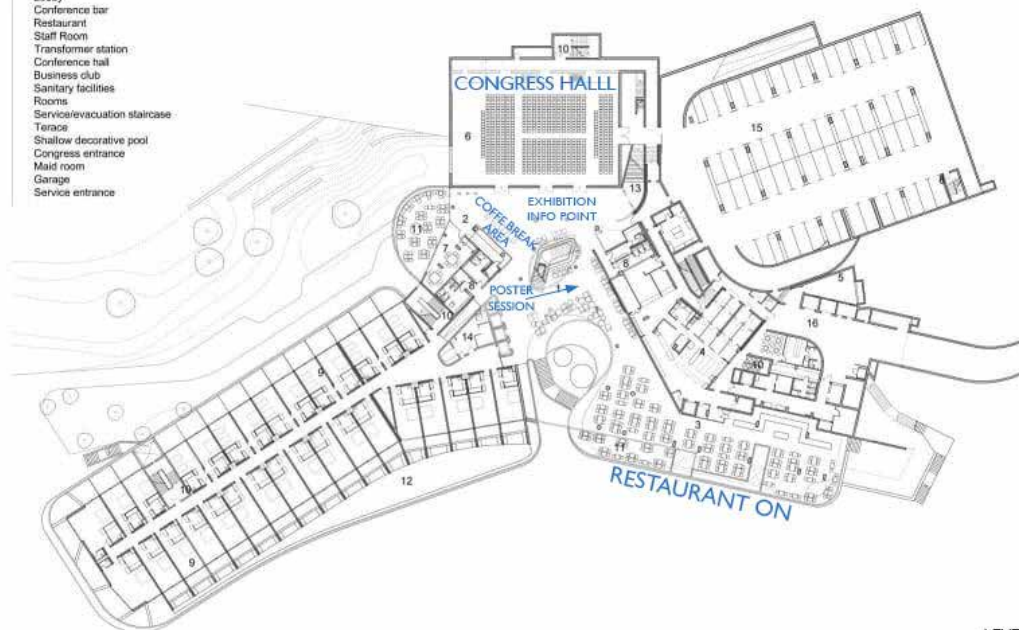
VARIOUS PROJECT MEETINGS 30.09. – 05.10.

30.09.2018. - Sunday			Room	Pers.	shape
9:00	18:00	CONFIDENCE Project: workshop on Biodosimetry (WG2-Task 2.2); Attendance on Invitation	4	25	U
14:00	20:00	Leu-Track Project ; Attendance on Invitation	6	10	R
1.10.2018. - Monday					
8:00	9:30	EURAMED Platform ExBoard meeting; Attendance on invitation	5	10	U
18:45	19:30	MENEA Meeting; Attendance on Invitation	4	20	U
2.10.2018. - Tuesday					
9:00	12:30	NERIS MB and R&D Committee meeting; Attendance on Invitation	6	20	U
9:00	18:00	TERRITORIES WP3; Attendance on Invitation	VIP	18	U
12:45	13:45	EURAMED GA	4	25	
13:00	14:15	SSH Session – Stakeholder Radon	5	12	U
16:00	18:00	SSH Session – Stakeholder Radon – medical exposure	5	12	U
18:00	20:00	MELODI Scientific Committee	VIP	20	U
18:00	20:00	MEDIRAD stakeholder Board meeting; Attendance on Invitation	6	12	U
18:00	20:00	ALLIANCE GA	2+3		T
19:30	23:30	CONCERT WP6; Attendance on Invitation (Dolo)	4	30	U
3.10.2018. - Wednesday					
9:00	11:00	E&T Session	VIP		T
11:00	12:30	OSL Practical session	VIP		T
18:00	20:00	CONCERT ExB/ESAB	4	30	U
4.10.2018. - Thursday					
8:00	12:30	CONFIDENCE WP Meeting	VIP	12	U
8:00	16:00	CONCERT project meetings	1+2		T
16:00	18:00	CONCERT MB Attendance on Invitation	1+2		T

16:00	18:00	SHAMISEN SINGS consortium meeting; Attendance on Invitation	5	20	T
18:00	-	MELODI EOGA	1+2	50	T
-	-	MELODI GA	1+2	50	T
5.10.2018. - Friday					
8:00	12:30	CONCERT stakeholder group meeting	3	40	T
8:45	12:30	Young scientists day	1		T
9:00	12:30	CONCERT WP7 meeting	4	25	T
14:00	20:00	CONCERT WP5 meeting	6	12	U
14:00	14:30	SSH ENGAGE exercise results	1		T
16:00	20:00	Different CONCERT group meetings - various rooms - decisions on site			

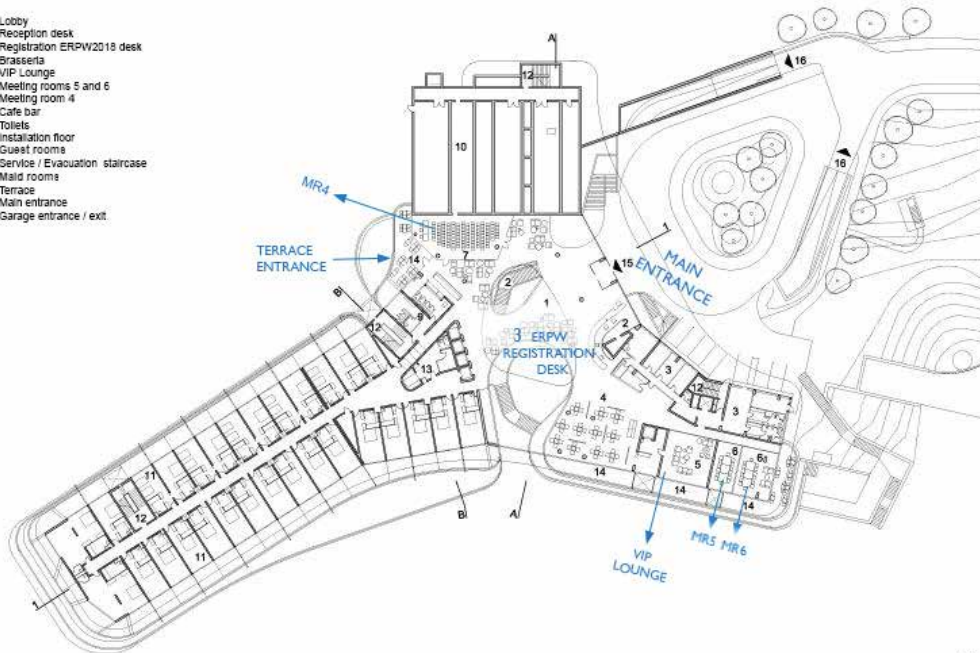
FLOOR PLAN

- 1 Lobby
- 2 Conference bar
- 3 Restaurant
- 4 Staff Room
- 5 Transformer station
- 6 Conference hall
- 7 Business club
- 8 Sanitary facilities
- 9 Rooms
- 10 Service/evacuation staircase
- 11 Terrace
- 12 Shallow decorative pool
- 13 Congress entrance
- 14 Maid room
- 15 Garage
- 16 Service entrance



LEVEL 1

- 1 Lobby
- 2 Reception desk
- 3 Registration ERPW2018 desk
- 4 Brasserie
- 5 VIP Lounge
- 6 Meeting rooms 5 and 6
- 7 Meeting room 4
- 8 Cafe bar
- 9 Toilets
- 10 Installation floor
- 11 Guest rooms
- 12 Service / Evacuation staircase
- 13 Maid rooms
- 14 Terrace
- 15 Main entrance
- 16 Garage entrance / exit



LEVEL 2

SOCIAL PROGRAM

WELCOME RECEPTION

(*Included in participant's and accompanying person fee)

Monday, 1 October 2018,

20:30 – 22:00

Restaurant Oleandar by the pool area

There's no better way to become re-acquainted with colleagues from the industry or make new business connections than at our Welcome Reception. This year, the Welcome Reception will take place around the hotel's Lone pool area, offering spectacular sunset views of the hotel's gardens, private beach and promenade. This will be an evening of networking and fun; participants will be served refreshing long drinks and local drinks as well as an array of canapés and petit fours. Enjoy the performance of a folk ensemble from nearby villages. For a good atmosphere an experienced DJ will play popular hits. *After the conclusion of the Welcome Reception, participants will be able to continue their fun at hotel's disco club (drinks will be at a cost-cash bar).*

Join us at the hotel's Pool Area on Monday evening!

SIGHTSEEING TOUR OF ROVINJ

Tuesday, 2 October 2018 ,

13:30 - 15:30

Meeting at the lobby in front of reception (LEVEL 2)

The town of Rovinj is the right destination for all of you seeking a sentimental atmosphere of the times that have forever gone by. In the Mediterranean, you can find it here, in the town that has begun its romantic life on an island, its restricted area resulting in crowded houses, narrow streets and small squares, still untouched by modern urbanism.

A walk through these lovely little streets will take you to a distant past, so be sure to bring your camera.

ISTRIAN SHOOTERS PARTY

Tuesday, 2 October 2018 ,

20:00 - 23:00

Monte Mulini Beach bar

Do not miss Istrian Shooters Party! All are invited!

It will be a great opportunity to have fun and meet with friends and colleagues from around the world in a relaxed atmosphere, enjoying the unmatched charm and beauty of the Adriatic Sea!

Drinks not included (ERPW coupon entitles you to a 5 % discount). After the conclusion of the Welcome Reception, participants will be able to continue their fun at the hotel's disco club (drinks will be at a cost-cash bar).

GALA DINNER WITH SPECIAL GUEST, ANA RUCNER!

Wednesday, 3 October 2018

20:30

Hotel Lone Big Ballroom / Congress Hall

World-famous cellist Ana Rucner will perform during our Gala Dinner. Having an artist with such exceptional musical talent perform during the gala evening will surely be an experience to remember.

Relish the rich sounds of the cello in the heart of Rovinj. This exotic performance blends classical techniques with Croatia's folkloric musical heritage and the contemporary stylings of the artist. A dramatist at heart, Ana's performance is a journey into an evening of enchantment.

POSTER SESSION AND EXHIBITION

An exhibition as well as poster session will take place in the hotel Lone in the immediate vicinity of the congress hall Lone (LEVEL 1).

POSTER SESSION

IMPORTANT! Poster stand will be marked with the numbers that the participant will receive during registration (along with other congress material).

When posting a poster, please pay attention to the assigned numbers!

SET-UP

Sunday, 29 September 2018	17:00 – 19:00
Monday, 1 October 2018	08:00 – 09:00

Opening Hours of the Poster session

Monday, 1 October to Friday, 5 October - Permanent Joint Poster Session (Selected and Invited Posters)
Printed posters will be displayed in the Portland Exhibition Hall for the entire duration of the conference. Authors are encouraged to discussion during coffee breaks.

DISMANTLING : Friday, 5 October 2018 15:00 – 16:00

EXHIBITION

BUILT-UP

Sunday, 29 September 2018	17:00 – 19:00
Monday, 1 October 2018	08:00 – 09:00

Opening Hours of the Exhibition

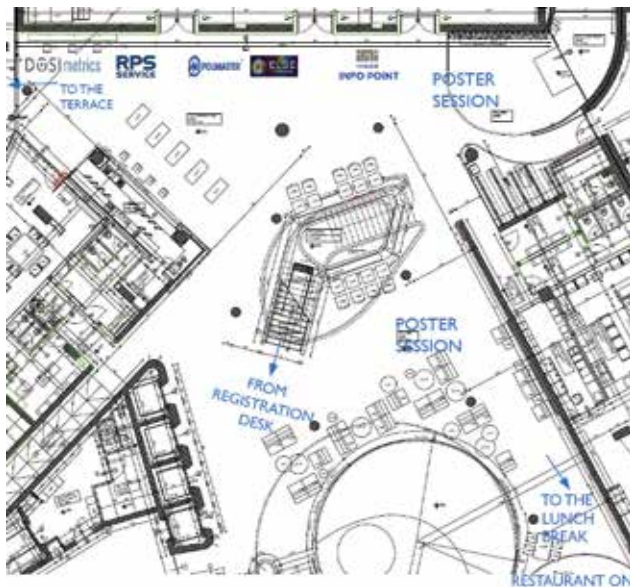
Monday, 1 October to Thursday, 4 October 2018	10:00 – 18:00
Friday, 5 October 2018	10:00 – 15:00

Booths must be open for viewing and staffed during these hours.

Build up/dismantling will not be permitted during the times listed above.

DISMANTLING : Friday, 5 October 2018 15:00 – 16:00

EXHIBITION AREA



EXHIBITOR INFORMATION

Booth 1 IMI



Ksaverska cesta 2,
10000, Zagreb, Croatia
www.imi.hr

Booth 2 ELSE NUCLEAR s.r.l.



Via Tito Vignoli 44,
20146 Milan, Italy
phone: +39 0331 620533
fax: +39 0331 620533
www.elsenuclear.com

Booth 3 UAB Polimaster Europe



Ezero str., 4, Didziasalio k.
Nemezio sen., LT-13264,
Vilnius Lithuania
+370 5 2102323
polimaster.eu

Booth 4 RPS Service Ltd



100 Royston Road, Byfleet Surrey, KT14 7NY
T: +44(0)7721 569137
rpsservice.co.uk

Booth 5 Dosimetrics



Otto-Hahn-Ring 6
81739 München, Germany
Phone: +49 89 954 5923 12,
+49 176 614 814 10
Fax: +49 89 954 5923 09
www.dosimetrics.de

UNDER THE AUSPICES



University of Zagreb
**FACULTY OF MINING,
GEOLOGY AND PETROLEUM
ENGINEERING**



University of
Zagreb



FACULTY OF SCIENCE

3rd www.erpw2018.com
Rovinj-Rovigno, Croatia
1-5 OCTOBER 2018
ERPW

**3rd EUROPEAN RADIOLOGICAL
PROTECTION RESEARCH WEEK**

